

LOUISVILLE

KNOW HOMELESSNESS



MEET MARCUS

Ph.D. Student, Advocate,
Formerly Homeless...



MEET BRITTNEY

Mother of Four, Survivor,
Formerly Homeless...



MEET MATTY

Skilled Tradesman, Professional Chef,
Formerly Homeless...

ABOUT THE CAMPAIGN

KNOW Homelessness is an ambitious campaign inspiring change in our understanding of homelessness and its effects in Louisville and Southern Indiana.

WHY FOCUS ON HOMELESSNESS?

For many of us, homelessness feels like a problem that is too big, too complicated to address. We want to break through that fatigue with human connection, with attention, and with information. The common understandings and representations of homeless communities are incomplete. Together, let's bring to light the reality and scale of homelessness, dispel the myths, and make the issue visible. Let's make it knowable.

Because knowing is caring.

Even though the United States is experiencing a series of intersecting crises, each of which compounds the issue in complex ways, these three things remain central to understanding the causes of homelessness.

SOME THINGS TO CONSIDER

- 1 It only takes a small series of sudden events** in one's life to be without a home.
- 2 Homelessness is an oftentimes temporary situation** in which many people find themselves.
- 3 We can end homelessness.** It has been shown that providing "Housing First," followed by services promoting stability has lowered homelessness rates by 50% in many U.S. cities.

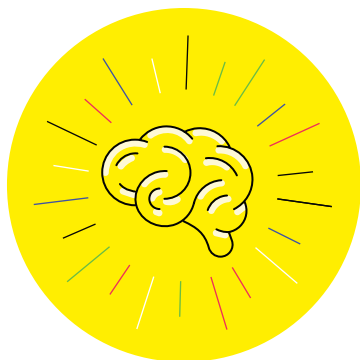


Find common ground at knowhomelessness.com

LISTEN. LEARN. SHARE.

KNOW
HOMELESSNESS

THREE THINGS YOU CAN DO



1. Keep an open mind and listen



2. Ask people who've experienced homelessness about their experience



3. Talk to your friends and family about what you learn

STATS

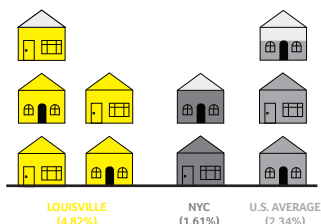
The issue of current-day homelessness is broad and complicated, affecting too many of our neighbors and communities.

↑ **15%**

The 2019 Point In Time count shows that **on a given night in Louisville, 1071 people are experiencing homelessness; a 15% increase from 2018.**



41% of youth experiencing homelessness reported they had been sex trafficked.



Louisville has an eviction rate of 4.82%. That's 3X higher than New York City's eviction rate and 2X the national average.

QUICK FACTS

80% of people experiencing homelessness are temporarily homeless due to a sudden series of changes in their lives **1**

50% of homeless women and children are fleeing domestic violence **2**

45% of adults experiencing homelessness have worked in the last 30 days **3**

Louisville's eviction rate is 2X the national average **4**

15-20% of the homeless population in Southern Indiana are children **5**

Find common ground at knowhomelessness.com